



Building NeXTGen **Responsible AI & Quantum Leaders**

Empowering the Next Generation
with AI-Ready Programs and
Future-Forward Skills



The World Is Changing, So Must **the Way We Learn!**

The world is changing rapidly from self-driving cars to AI-generated content, from algorithms that diagnose diseases to smart assistants simplifying our everyday lives.

This transformation brings exciting opportunities for the next generation. To truly prepare them, we must nurture:

- Strong math foundations
- Creative, logic-based coding skills
- Deep understanding of AI and hands-on possibilities

This shift isn't just important, it's essential. And the earlier we begin, the stronger their future becomes.



Here's How, We Help You Grow

{igebra.ai} is a US-based AI research, development, and education company founded by Srinivasa Vemula—an educator and technologist based in the United States.

He is joined by a team of co-directors and a growing network of 50+ global partners. Together, they bring deep expertise in education, technology, and innovation, delivering the knowledge, tools, and passion needed to help students become truly AI-ready.



AIEdge

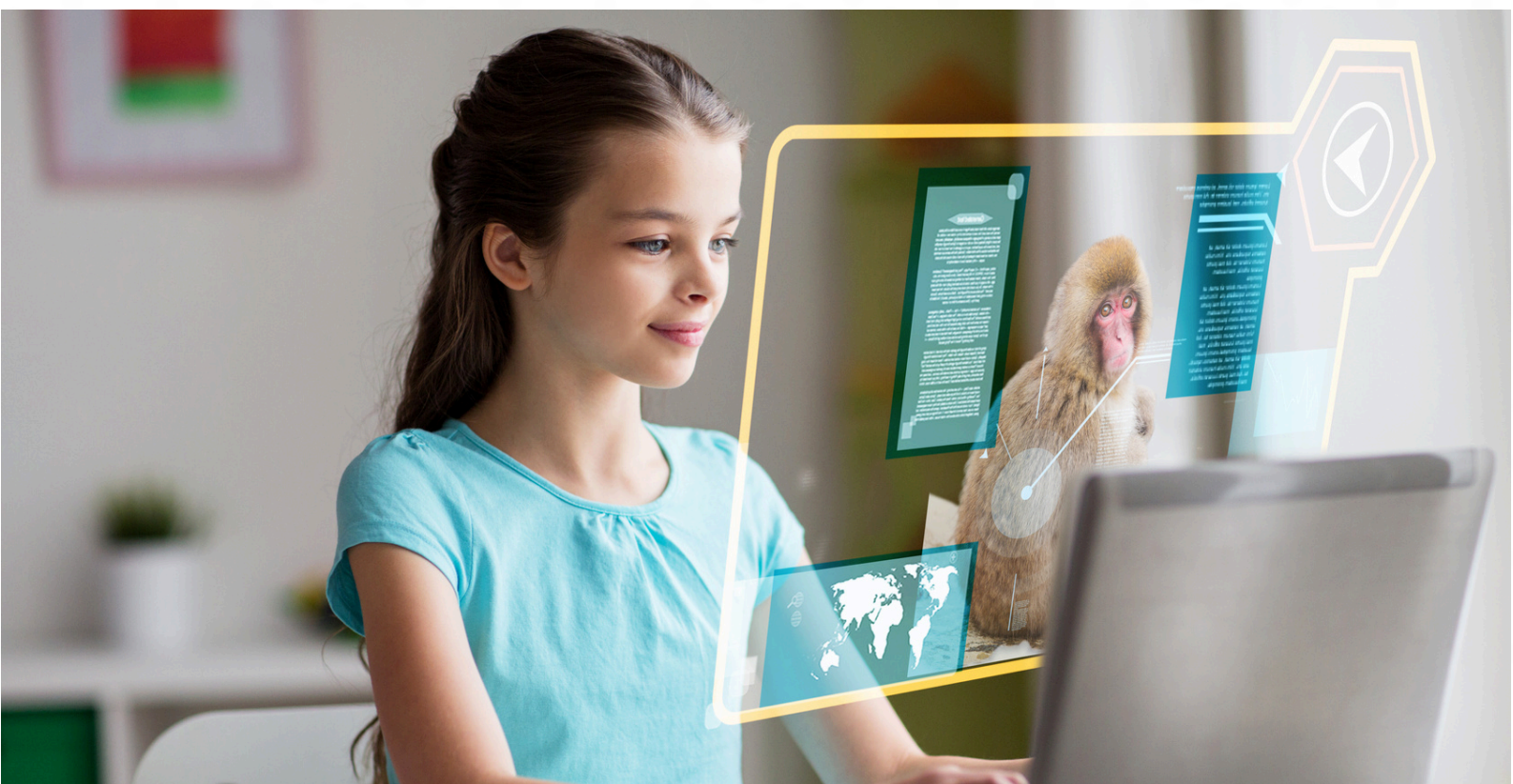
Learn AI. Create With It. Think Future.

Program Details:

- ✓ Live Online Mini Group Classes
- ✓ Highly Qualified, Passionate & Trainers
- ✓ High Quality Video Backup to Revise Anytime

Group	Grades	Levels	Frequency	Duration	Total Classes
Elementary	Grades 4-5	Level 1, 2, 3	1 Class/Week	90 Minutes	20 Classes
Middle School	Grades 6-8	Level 1, 2, 3	1 Class/Week	90 Minutes	20 Classes
High School	Grades 9-10	Level 1, 2, 3	1 Class/Week	90 Minutes	20 Classes

\$499 Per Level



AIEdge

Topics for Elementary

Level 1

- What Is AI
- History of AI
- AI Applications in Daily Life
- AI vs Human Intelligence
- AI in Different Industries
- Different Types of AI
- What AI Can and Can't Do
- How Smart Assistants Work
- Projects

Level 2

- What Is Generative AI
- What Is a Prompt?
- Image Generation with AI
- Video Creation Using AI
- AI-Powered Music Making
- How AI Generates Content
- Ethical Use of AI Creations
- Design & Data Thinking - Atoms
- Projects

Level 3

- What is data
- Types of data
- What Is Machine Learning?
- What Is Deep Learning?
- Input-Output in AI Systems
- Real-World AI Use Cases
- Introduction to CAVs
- Design Thinking for Kids
- Responsible Use of AI
- Building an AI-Powered Idea

Topics for Middle School

Level 1

- Learn in-depth about AI
- AI Vs Traditional Programming
- What Is Machine Learning
- Types of Machine Learning
- What is Deep Learning
- How Neural Networks Work
- Projects

Level 2

- Understanding GenAI Models
- Creating Content with Multimodal Generative AI Models
- What Is Prompt Engineering?
- How Diffusion Models Work
- Design & Data Thinking - DNA
- Projects

Level 3

- What Is NLP?
- What is LLM?
- What is Transformer?
- Intro to Algorithms & Decision Trees
- What is Agentic AI
- AI in the Future – Trends and Possibilities
- Ethics in AI – Deepfakes, privacy, misinformation

Topics for High School

Level 1

- Evolution of AI and Current Landscape
- Machine Learning Vs Deep Learning
- Deep Learning Architectures
- AI in Robotics & Automation
- Mathematics Behind AI (Algebra, Probability, Logic)
- AI Use Cases in STEM Industry
- Projects

Level 2


- Foundation Models and Transfer Learning
- Fine-Tuning vs Prompt Tuning: Key Differences
- Architecture of LLMs – Transformers & Attention Mechanism
- Prompt Engineering Techniques – Zero-shot, Few-shot, Chain-of-Thought
- Bias, Hallucinations, and Safety Challenges in LLMs

Level 3


- LLM Optimization Techniques
- Multi-Agent Systems
- AI for Scientific Discovery & Simulation
- Intro: Quantum Computing
- Quantum Vs Classical Computing
- Quantum Randomness and Superposition – Simple Thought Experiments
- Building Scalable AI Systems: APIs, Pipelines, & Deployment



Contact Us Get in Touch

 +1 (510) 579-2392

 svemula@igebra.ai

 igebra Ai, Inc.
131 Continental Dr, Suite 305
Newark, DE 19713

